

Drawing a Still Life



Hello it's Joe from Mont Marte. Today we will be creating a Japanese themed still life using a few of the fantastic Mont Marte Drawing Products. So grab your Mont Marte Art supplies and...

Let's get into it!

Material List

MSB0007	Mont Marte Sketch Book A2 150 gsm
MPN0045	Mont Marte Woodless Graphite Pencils 6 pce
MPN0024	Mont Marte Earth Tones Graphite Pencils
MPN0051	Mont Marte Water soluble Graphite Sticks 3pce
MPB0025	Mont Marte Squirrel Mop





Step 1: Setting up the Still life

Using household objects, arrange a similar Still Life to mine or choose another theme, but remember to keep the objects simple so that you can draw them. To add stronger contrast to your Still Life set up a light on one side of the arrangement.



Step 2: Drawing in the Outline

Using your HB pencil, begin drawing the outline of the focal object in your arrangement, such as the soy sauce bottle. Once you have drawn in the bottle, you can draw the other objects to scale, using the bottle as reference.

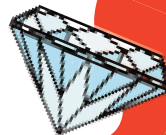


Step 3: Drawing the Background

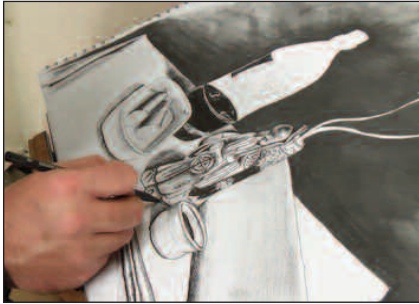
Use the 12B Water Soluble Graphite Stick to scribble in the background, you want the background to be quite dark so the objects stand out. Then dip your brush in the water and brush over the Graphite you have just drawn in.



Joe's Jem



When drawing your Still Life, draw what you see, not what you think you see.



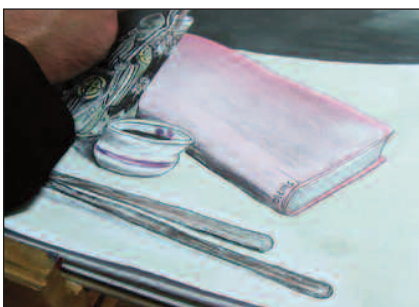
Step 4: Shading

Shading is generally built up from lightest to darkest tone on each item. Use the 8B for the dark shadow and the 2B for the lighter shadow. Bear in mind the direction of the light source and keep highlight areas free of pencil marks. You can create highlights using an eraser too.



Step 5: Adding the Graphite Earth Tones

Once you have completed the shading, add subtle colour using the Graphite Earth Tones in areas such as the book, leaves, bottle and sushi. The Earth Tone Pencils are water soluble, so once you have coloured in, dip your mop brush in to water and apply it to these areas.



Step 6: Charcoal

The last step is to add Charcoal to the darkest parts of the drawing, such as under the book, statue, bowl and bottle.

I hope you try this exercise, as drawing shapes and tone is one of the fundamental skills of all visual art. Until next time...

*Keep on
Painting*