

Weekly Newsletter

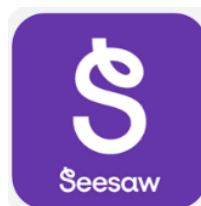
Monday 22nd April



Unsworth
Primary School

Together we build understanding

Home learning grids for summer term are now on SeeSaw. Please upload any home learning to SeeSaw!



Achievement Awards

Rec: Seth, Evan, Y1: Lucy & Ben, Y2: Sadie & Zack, Y3: Sunny & George, Y4: Ophelia & Enzo, Y5: Jack & Angel, Y6: Matthew & Charlotte.

Forest School Dates

Each class will have a session of Forest Schools and Outdoor Learning this summer term with further regular sessions are planned for the Autumn Term. We ask for your support to ensure come ready in the appropriate clothing to enjoy the sessions.

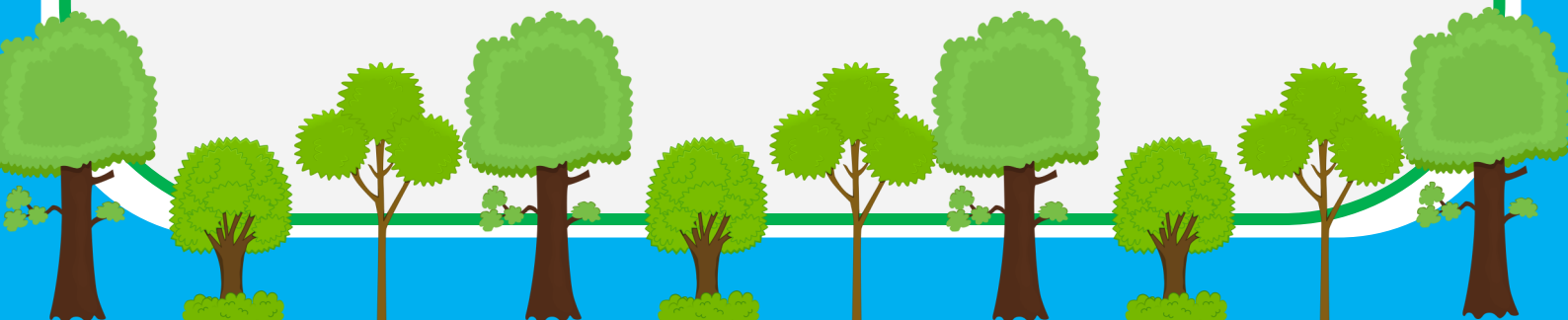
Children need:

- To come to school in their own clothes suitable for outdoor learning and the weather that day. Shoulders and tummies must be covered.
- A waterproof coat with a hood—depending on the weather
- Waterproof trousers if you already have them—named! More important for Autumn term.
- A sun hat is a must! - named!
- Wellies or old trainers or walking boots in a named bag
- Please arrive at school in trainers to wear indoors for when they aren't in the forest.

Wednesday 5th June
Wednesday 19th June
Wednesday 26th June
Wednesday 3rd June
Wednesday 10th July
Wednesday 17th July

Y4 full day
Y6 morning and Reception in the afternoon
Y3 afternoon
Y5 morning and Y2 in the afternoon
Y1 morning and Y4 in the afternoon
Linc children in the morning

Thank you for your support!



Sunshine, Sun Hats and Sun Cream



As we prepare for the sunnier days to come please can I give you a few summer time reminders.

From the beginning of May we ask for children to have a sunhat in their bag—with their name on.

Reception children need to keep a sun hat in school for the summer term.

Please apply sun cream before school. On the very hot days we will allow children to reapply sun cream at lunchtime but younger children do find this tricky to do. So suncream application before school is an important part of the morning routine in summer please. Thank you for your support with this.

Reception children will receive a separate letter this week about sun cream as we will provide this in school. Thank you.

Class Assemblies

Rec	Wed 8th May
Y2	Wed 12th June
Y1	Wed 3rd July

2.45pm—doors open 2.40pm

We Need Tree Logs

We are building our own Outdoor learning area and want to create a sitting circle. If you know anyone that has logs suitable to use as seats please let me know. Need to be approximately 30cm in height.
Thank you!

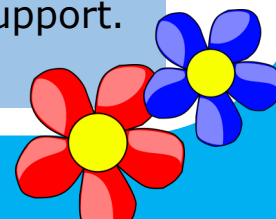
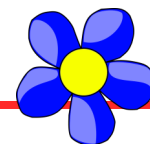
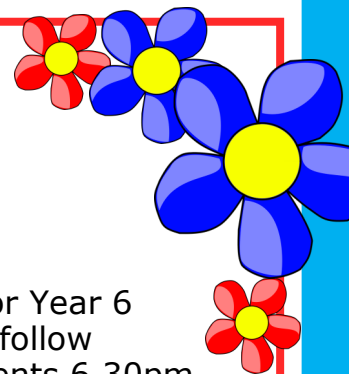


Summer Term Diary Dates

Monday 22nd April
Thursday 25th April
Monday 29th April
Thursday 2nd May
Monday 6th May
W/B 13th May
Monday 20th May
Tuesday 21st May
Thursday 23rd May

Friday 24th May
W/B 3rd June
W/B 10th June
Wednesday 19th June
Wednesday 26th June
Wednesday 17th July
1st July—3rd July
Monday 15th July 6.30pm
Friday 19th July

PTA Meeting 2.30pm—everyone welcome
Class Photographs
Class Call in 3.40pm—4.15pm
9-10am SEND Parents Coffee Morning
School closed—Bank Holiday
Year 6 SATS Week—more details to follow for Year 6
Whole School Samba Day ~ more details to follow
New Parents Meeting for New Reception Parents 6.30pm
Sports Day
Rec & KS1 in the morning
KS2 in the afternoon
School Closes for half term break
Multiplication Tests in Y4
Phonics Screening tests in Y1
Year 3 Trip—letter coming home this week
Move Up Morning—children visiting their new classes
Front Row Music Concert 2.30pm—**CHANGE OF DATE**
Reception Balance Bikes
Y6 Leavers Performance for parents & family members
School closes at 2pm



Have a great week! And thank you for your continued support.
Take care, Jo Grundy Headteacher