

UNSWORTH NEWS



Unsworth
Primary School

MONDAY 27 APRIL 2026



Building Work Update ...

The most recent update is that we expect the portacabin classrooms for Reception and Year 1 will arrive on Saturday and be fitted over the next couple of weeks. When we have a date for children to move into the classrooms we will communicate this to Y1 & Reception parents.

The building compound will be set up in the next two weeks on the car park. This will reduce the number of parking spaces. For this reason we will be writing to parents with parking permits about necessary interim arrangements.

Friday 1st May - Bake Sale and Blue Accessory

April is World Autism Acceptance month. To raise awareness children will have a special assembly in school next week.

Children are invited to celebrate and raise awareness by wearing a blue accessory with their uniform on Friday 1st May in exchange for a donation to the Linc class charity, The National Autistic Society. Donations can be made via Arbor.

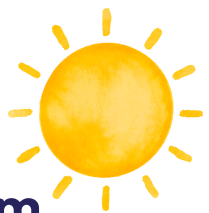
A blue accessory - could be socks, a hair bobble, bow, scarf, hat etc. This will be worn with full school uniform.

In addition to this, the LinC class will also be raising money for this amazing charity by baking some cakes to sell to children in school at break time and lunch time.

Cakes will cost 50p and money will need to be sent in a named envelope on Friday so your child can visit the stall and buy a cake at their morning break time.

All proceeds will be donated to the LinC class charity, The National Autistic Society.

Thank you for supporting such a wonderful charity and our fund raising event.



Award Winners

Each class chose 3 winners, one for each value. Last week's winners were:

YN: Hana
YR: Theo, Leo, Bailee
Y1: Thea, Rory, Millie
Y2: Aisha, Xander, Skye
Y3: Ollie, Charlie, Brandon
Y4: Lorayah, Chloe, Edith
Y5: James, Sophie, Harry
Y6: Indie-Pea, Enzo, Louis
LinC: Roman, Oliver, Elliott

Sun Hats and Sun Cream

Please remember that on warm, sunny days children should have sun cream applied before school and bring a named sun hat.

This is especially important for Nursery and Reception pupils, who spend more time learning outdoors. Reception and Nursery parents please complete the online form about sunscreen permission.

MONDAY 27 APRIL 2026



Unsworth
Primary School

DATES FOR YOUR DIARY



Wednesday 29th April - Reception Trip to the Zoo

Monday 4th May - Bank Holiday

Tuesday 5th May - Matt Goodfellow Author Visit in Y4, Y5, Y6

Wednesday 6th May - Y1 visit to Salford Museum

Wednesday 6th - Class Call In - 3.30pm ~ Postponed

Friday 8th May - School Photographer - class photos

11th - 14th May ~ Y6 SATS Assessments

Monday 11th May - PTA planning meeting - 2pm ~ EVERYONE WELCOME

W/B Monday 18th May - WOW Week - more info to follow

Tuesday 19th May - Sports Day

Linc, Nurs, Rec, Y1 & Y2 9.30-11am / KS2 afternoon 1.30 -3pm

Friday 22nd May - Close for Half Term

Monday 1st June - School opens

Wednesday 10th and Thursday 11th June SCARF Workshops

15th - 17th June - YR Balance bikes

Friday 19th June - Non-uniform day for Party in the Playground ~ more details to follow

Tuesday 23rd June - Y2 visit Martin Mere

Thursday 25th June - Party in the playground - 3pm - 5pm

Wednesday 1st July - Front Row Summer Concert - 2.45pm

Friday 10th July - Y5 trip to Ski Rossendale

Wednesday 15th July - Y6 Leavers Show - more details to follow

Thursday 16th July - Y6 trip to Tree Top Nets

Friday 17th July - School closes for summer - 2pm



Forest School Dates

When children are taking part in forest schools they need to come in their PE kit. They need to bring an old pair of shoes or wellies, or walking boots in a carrier bag to change into. They need to be dressed for the weather. At this point in the year this could mean sun hats, or waterproofs and layers.

- Wednesday 29th April: Y1
- Wednesday 6th May: Y2
- Wednesday 13th May: Rec

- Wednesday 3rd June: Y4
- Wednesday 10th June: Y5
- Wednesday 17th June: Y6 ~ date change
- Wednesday 1st July: Linc Class
- Wednesday 8th July Y6 & Rec Buddies

